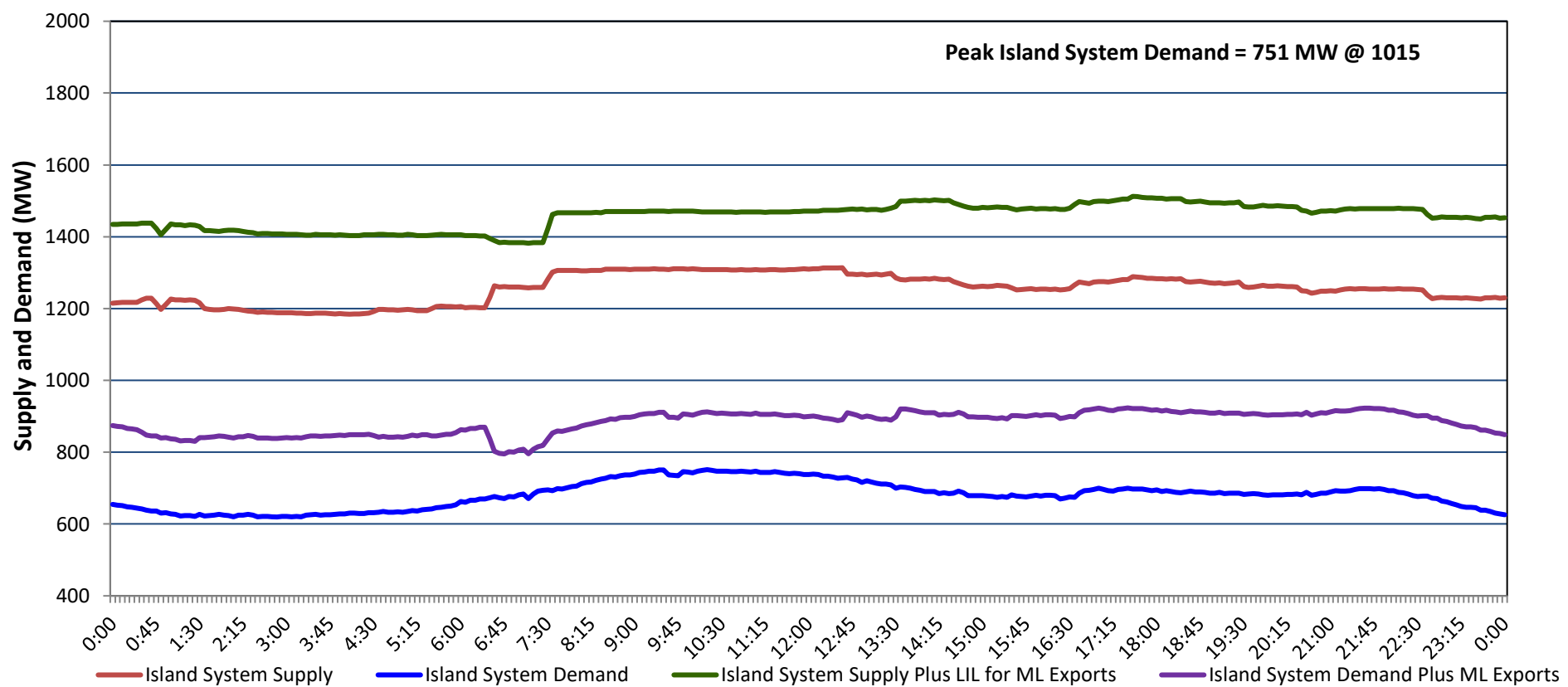


Newfoundland Labrador Hydro (NLH) Supply and Demand Status Report Filed Monday, June 16, 2025

Section 1 Island Interconnected System - Supply, Demand & Exports Actual 24 Hour System Performance For Saturday, June 14, 2025



Island Supply Notes For June 14, 2025

- A As of 0800 hours, March 30, 2025, Holyrood Unit 3 unavailable due to planned outage 130 MW (150 MW).
- B As of 0823 hours, March 31, 2025, Bay d'Espoir Unit 1 unavailable due to planned outage (76.5 MW).
- C As of 0823 hours, March 31, 2025, Bay d'Espoir Unit 2 unavailable due to planned outage (76.5 MW).
- D As of 0800 hours, May 04, 2025, Holyrood Unit 1 unavailable due to planned outage (170 MW).
- E As of 0851 hours, May 05, 2025, Hardwoods Gas Turbine unavailable due to planned outage (50 MW).
- F As of 1538 hours, May 16, 2025, Holyrood Diesels available at 8 MW due to forced derating (10 MW).
- G As of 1140 hours, June 02, 2025, Hawkes Bay Diesel Plant available at 2.5 MW due to forced derating (5 MW).
- H As of 1126 hours, June 04, 2025, St. Anthony Diesel Plant available at 6.7 MW due to forced derating (9.7 MW).
- I As of 0800 hours, June 08, 2025, Holyrood Unit 2 unavailable due to planned outage 115 MW (170 MW).
- J At 0000 hours, June 14, 2025, Bay d'Espoir Unit 3 unavailable due to forced extension to planned outage (76.5 MW).
- K At 0000 hours, June 14, 2025, Bay d'Espoir Unit 4 unavailable due to forced extension to planned outage (76.5 MW).

Section 2 Island Interconnected System - Supply, Demand & Outlook

Sun, Jun 15, 2025	Island System Outlook ²	Seven-Day Forecast	Island System Daily Peak Demand (MW)	
			Forecast ⁸	Adjusted ⁶
Island System Supply: ⁴	1,234 MW	Sunday, June 15, 2025	775	725
NLH Island Generation: ^{3,7}	840 MW	Monday, June 16, 2025	750	700
NLH Island Power Purchases: ⁵	90 MW	Tuesday, June 17, 2025	765	715
NP and CBPP Owned Generation:	210 MW	Wednesday, June 18, 2025	760	710
LIL/ML Net Imports to Island: ⁹	94 MW	Thursday, June 19, 2025	750	700
		Friday, June 20, 2025	765	715
7-Day Island Peak Demand Forecast:	775 MW	Saturday, June 21, 2025	755	705

Island Supply Notes For June 15, 2025

- Notes:
1. Generation outages for running and corrective maintenance are included. These are not unusual for power system operations. They generally do not impact customer supply. Hydro schedules outages to system equipment whenever possible to coincide with periods when customer demands are low and sufficient supply reserves are available. However, from time to time equipment outages are necessary and reserves may be impacted.
 2. As of 0800 Hours.
 3. Gross continuous unit output.
 4. Gross output from all Island sources (including Note 3).
 5. NLH Island Power Purchases include: ML Imports, Exploits Generation, Rattle Brook, Star Lake, Wind Generation and capacity assistance (when applicable).
 6. Adjusted for interruptible load and the impact of voltage reduction when applicable.
 7. Due to limitations inherent in the design of combustion turbines, the output of combustion turbines may be reduced in the event that ambient temperatures exceed the threshold required for full rated output. This threshold is dependent on the design of each turbine.
 8. Does not include ML Exports.
 9. LIL Import sunk in the Island System. Actual LIL flows will be restricted by various system conditions including, but not limited to, Island Load, ML Exports and Avalon Unit status.

Section 3 Island Peak Demand and Exports Information Previous Day Actual Peak and Current Day Forecast Peak

Sat, Jun 14, 2025	Island Peak Demand ¹⁰	10:15	751 MW
	Exports at Peak		161 MW
	LIL Net Imports to Island		2,994 MWh
Sun, Jun 15, 2025	Forecast Island Peak Demand		775 MW

- Notes: 10. Island Demand is supplied by NLH generation and purchases, LIL Imports plus generation owned and operated by Newfoundland Power and Corner Brook Pulp & Paper (Deer Lake Power, DLP).